

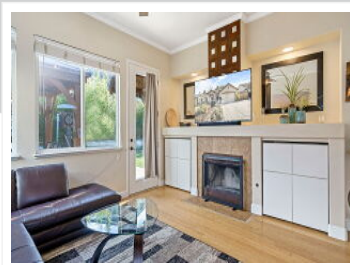
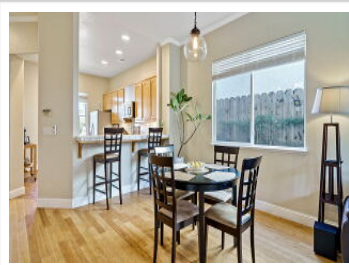
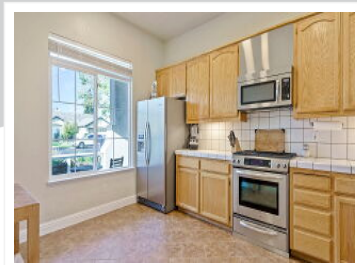
1952 Bolton Lane, Manteca, CA 95336

• 3 bedrooms • 2 bathrooms

• 1,400 Sq Ft



View virtual tour at:
<https://vtours.k-robbdesigns.com/1952-bolton-lane-manteca/>



Ellis Archerda

Realtor

DRE# 02088200

(209) 401-6815

ellisa@pmz.com

<http://ellisa.pmz.com>

PMZ Real Estate



(209) 401-6815

ellisa@pmz.com



The information contained herein has been obtained through sources deemed reliable, but cannot be guaranteed as to its accuracy. Not intended to solicit buyers or sellers currently under contract with a brokerage.